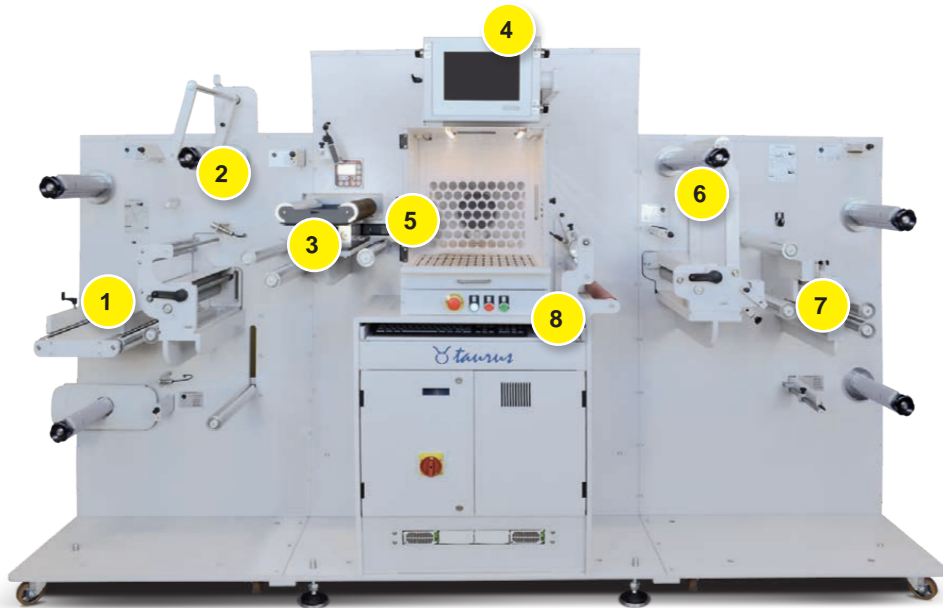


Power to Creativity!

No die tool anymore with Taurus, it is roll to roll digital converting solution powered by a Galvo system technology and equipped with a sealed CO₂ laser source to finish printed jobs at incredible cutting quality and speed.

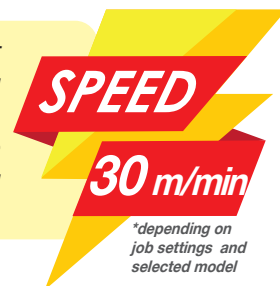
Developed on 3 axes scanner and the latest in laser technology, this unit offers a better X and Y register and cut depth control (Z) allowing the user to cut with different power levels on the same labels.

This means an increase in quality and precision of label edges and a higher flexibility in label design supporting multiple laser processes and the laser beam will kiss-cut, slit and perforate most materials used in the label industry.



1. Splicetable
2. Cold laminating
3. Web guide
4. Integrated TouchScreen PC
5. Black-mark sensor
6. Matrix removal module
7. Slitting
8. Sliding drawer

Up to 30 m/min depending on laser power, cut pattern and material being used this finisher offers unwinding, laminating, digital cutting, waste removing, rewinding and length slitting in a single pass.



WHY TAURUS?

Running label production in-house means reducing inventory requirements and costs.

Producing full bleed labels will no longer be a nightmare.

Laminating adds durability to your labels with no need for special media.

No need to order pre-die cut label rolls.

No need to order die tools.

A quick and simple solution for labels on demand.

TECHNICAL SPECIFICATIONS

Part number	TRS25PL	TRS35PL
Cutting area	250mm x 250mm (9.84" x 9.84")	330mm x 330mm (13" x 13")
Web Width	50mm - 250mm (1.96" - 9.84")	50mm - 350mm (1.96" - 13.78")
Input Roll Diameter	500mm (19.68")	500mm (19.68")
Core Holder	Mechanical (3")	Pneumatic (3")
Laser Spot Size	up to 250 µm	up to 350 µm
Laser Source Power	150W - 10.6 µm	300W 10.6 µm
Laser Type	Single Head CO ₂	
Minimum Slitting Width	19mm (0.75")	
Type of cut	kiss-cut, full cut, perforation, engraving	
Cut Ability	Both printed and unprinted media	
Media type allowed	Paper, Plastic Films (media test recommended)	
Power Requirements	220Vac 18A 4000W	220Vac 34A 7500W
Dimensions	280 x 74 x 166 cm (111" x 30" x 66")	290 x 92 x 180 cm (115" x 37" x 71")
Accessories Required	Water Chiller and Fume Extractor (contact us for more details)	

SMART SOLUTIONS FOR THE LABELING INDUSTRY

TAURUS - THE SMARTEST LASER FINISHING SYSTEM



Working digitally means deliver your jobs just on demand and thanks to the smart features and high speed offered by Taurus the job size, path complexity and work execution of your finished labels will not be a limitation anymore.

EcoFriendly

Taurus is eco-friendly and energy efficient. The unit has an adaptor located on the back to giving the operator an option to connect a fume extractor. The air flow system prevents any material from burning and keeps the working area clean. The Taurus unit also has a build-in chiller. This water cooling system helps with monitoring and regulating the laser source temperature.

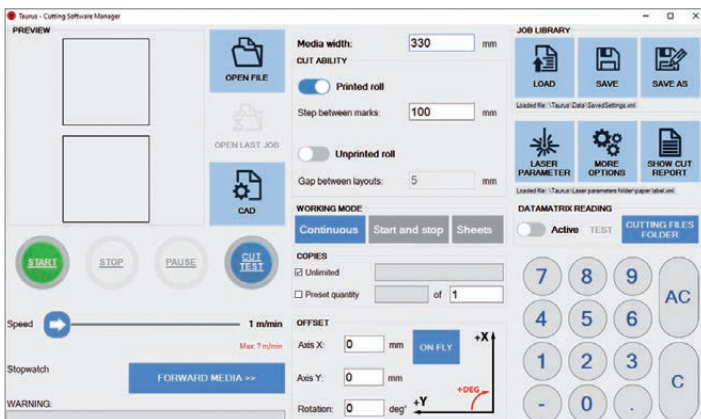


WEB GUIDE

As standard the unit features a web guide to guarantee the media path straight through the unit.

ULTRASONIC TENSION CONTROL

Each core is managed by its own tension media control to keep adjusted automatically the media tension on the roll regardless its diameter.



this innovative and smart cutting management software allows the operator to easily adjust the work speed and laser output for fabulous cutting, time optimization and less materials waste which in turn = **greater profits**.

The User friendly management software for Windows is compatible with Adobe PDF files.



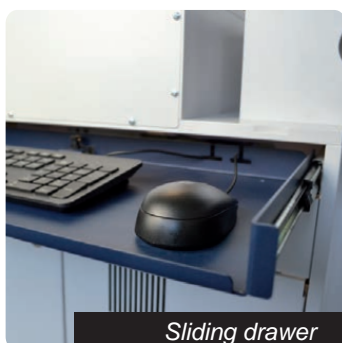
TOUCHSCREEN

Equipped with an integrated PC where the software is installed, the operator easily sets all the working parameters.



DATA MATRIX

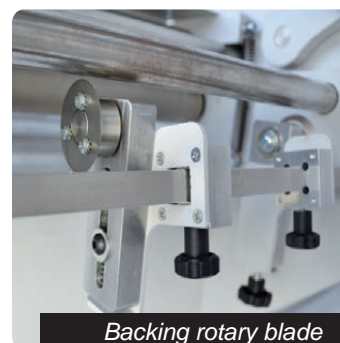
This feature allows system to load automatically the cut file related the job printed onto the media.



Sliding drawer



Splice table



Backing rotary blade



Slitter module